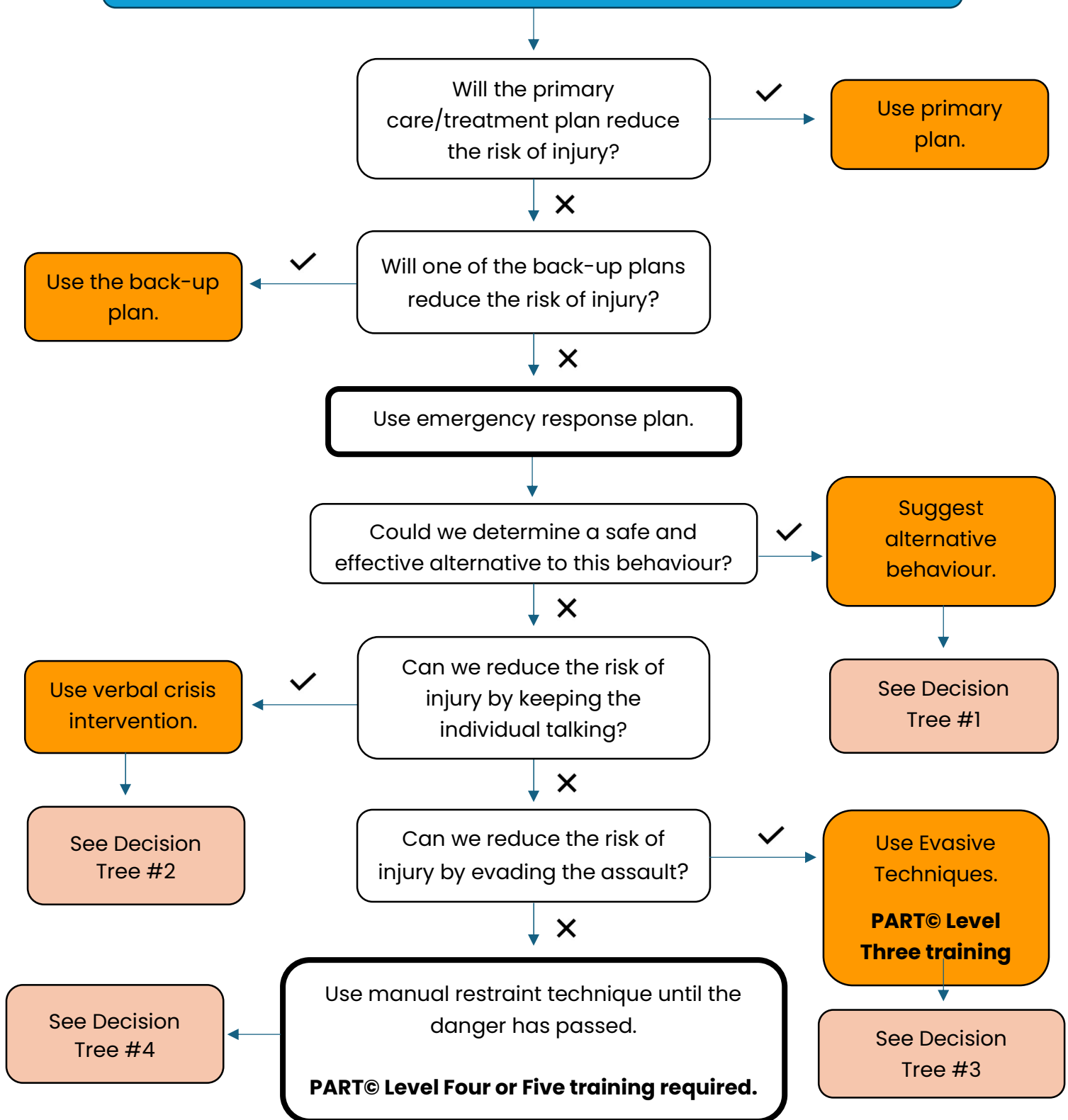
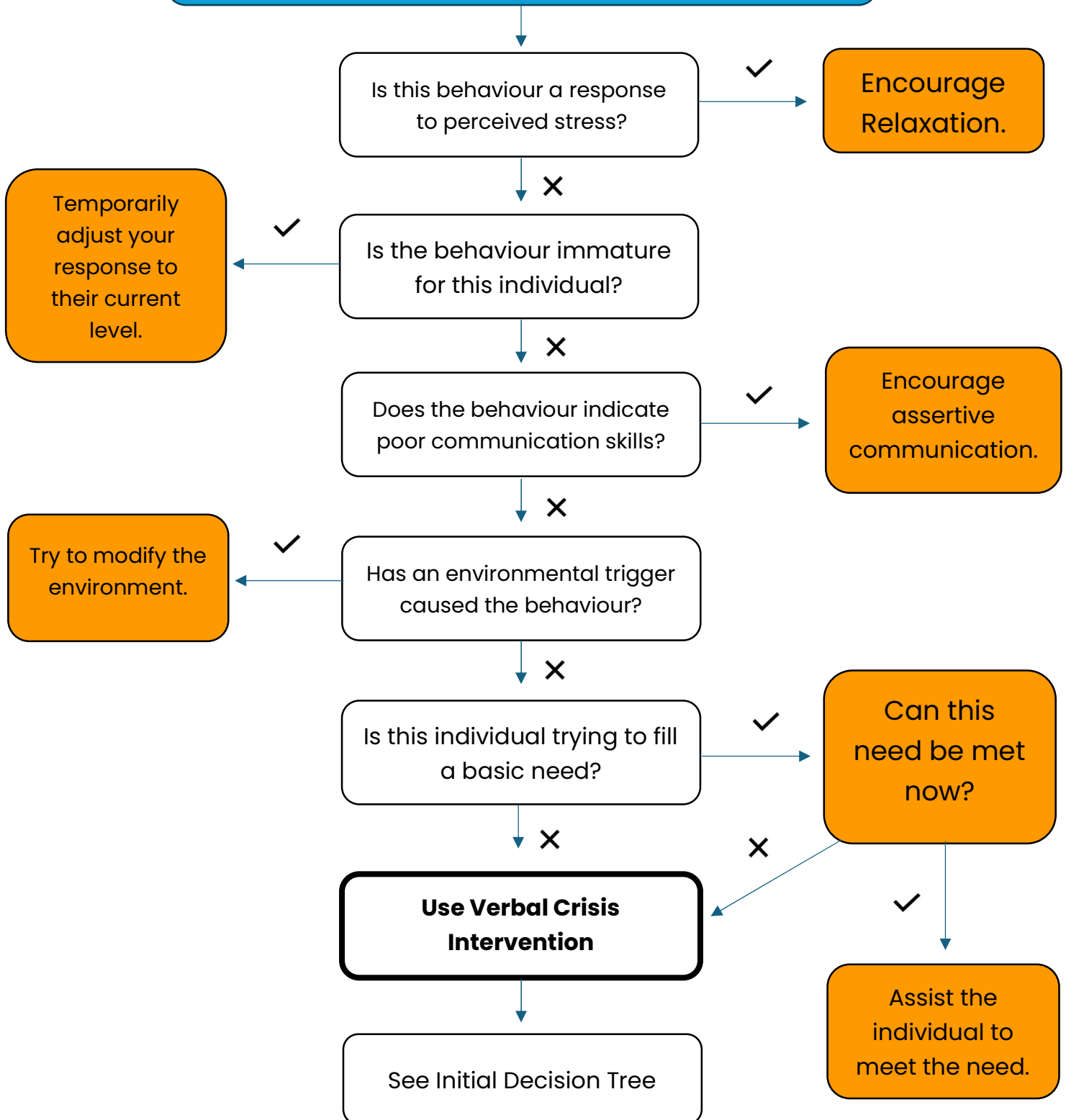


Initial Decision Tree

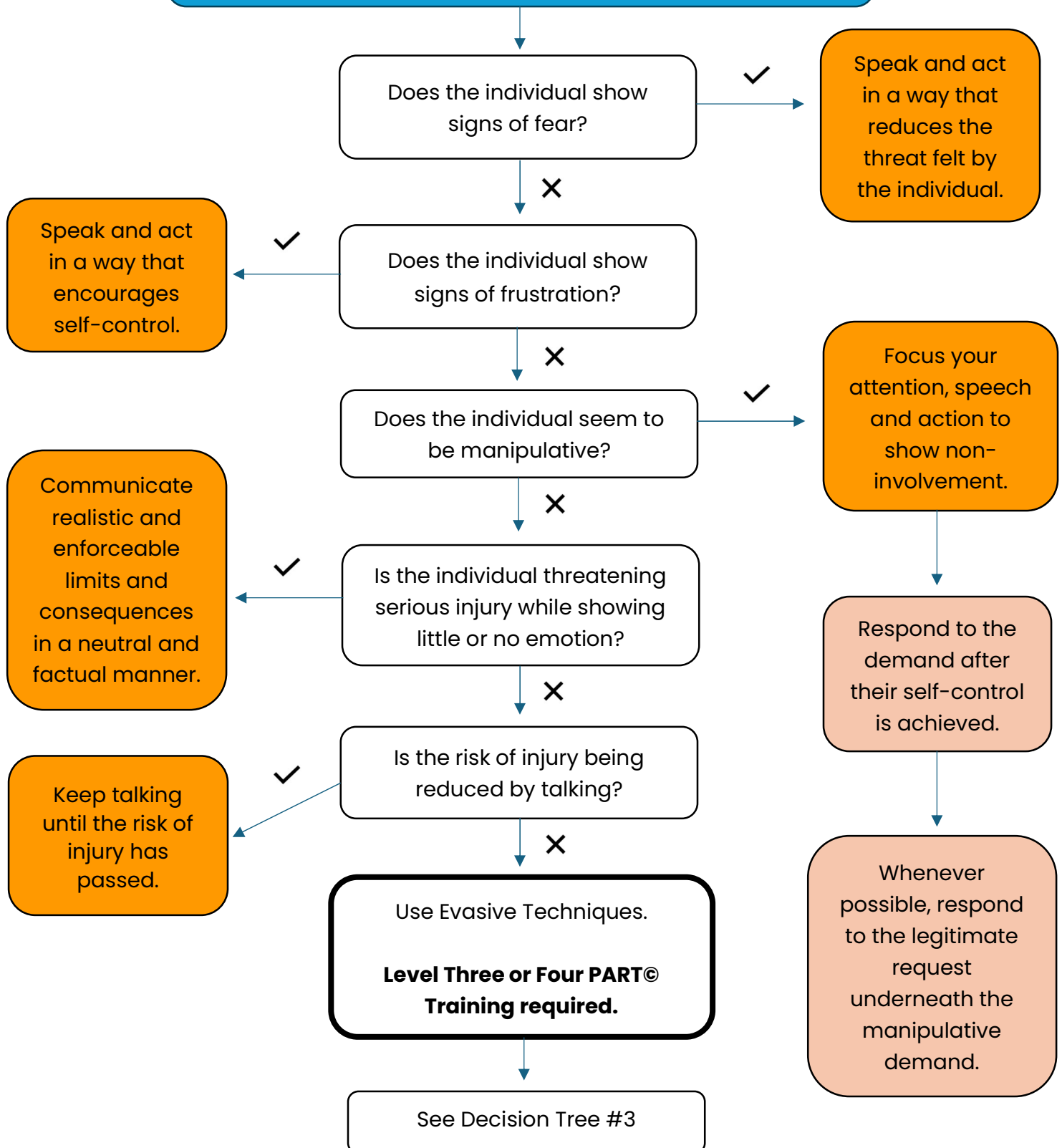
Responding to behaviours that may cause injury.



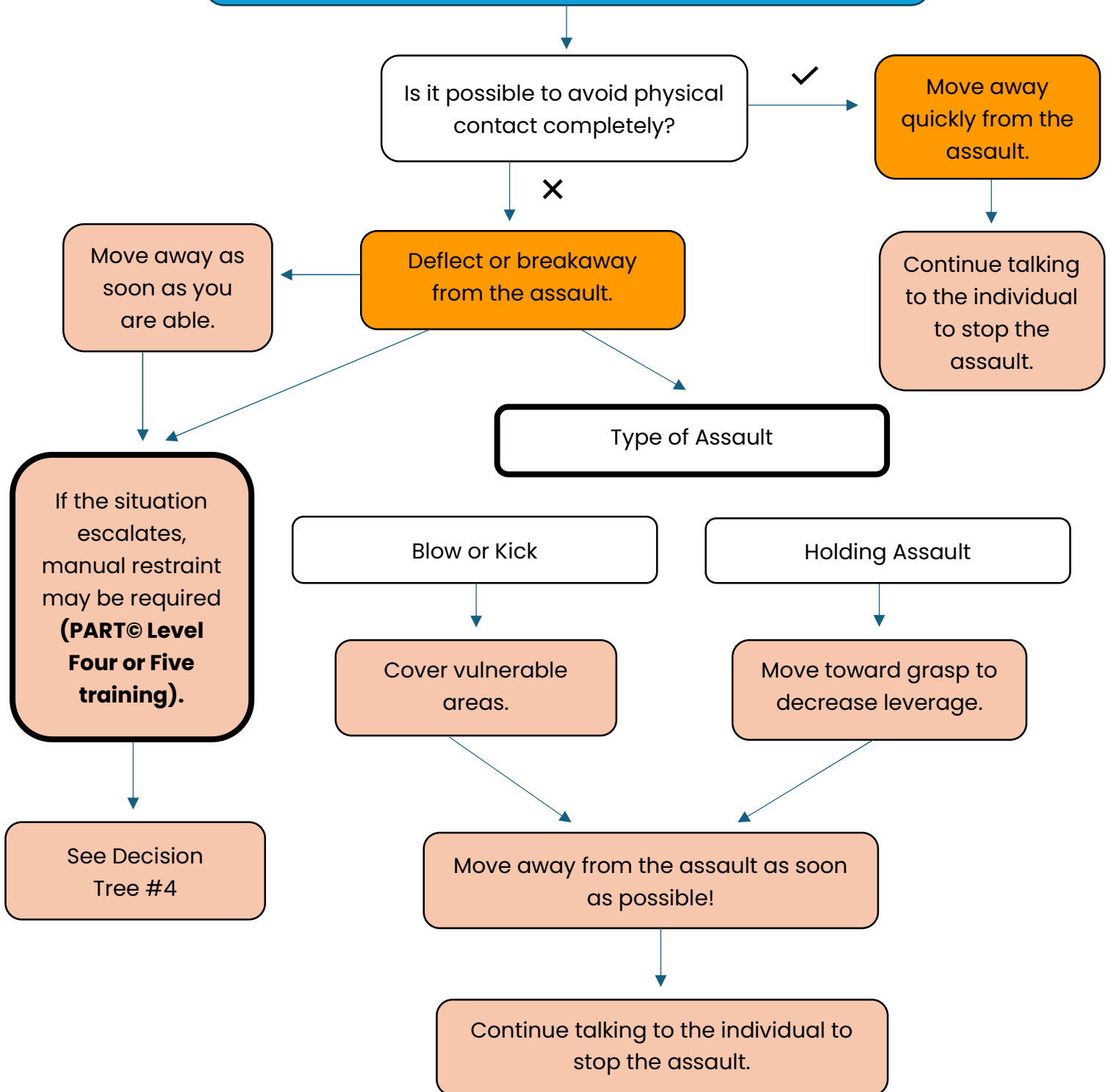
Suggesting Alternative Behaviour



Using Verbal Crisis Intervention



Using Evasive Techniques



Decision Tree #4

Manual Restraint

Manually restrain until danger of injury has passed.

Are there enough personnel of
sufficient size and skill to manually
restrain this individual?

✓

×

Use standing
restraint.

Can the risk of injury be minimized
by briefly holding the individual in
a standing position?

✓

×

Continue to try
and evade the
assault until
enough personnel
are available.

Talk to the
individual until
the risk of injury
has passed, then
release slowly
and carefully.

Will the risk of injury be reduced
by holding the person against
the wall briefly?

✓

Use wall assisted
restraint.

×

Will the risk of injury be reduced
by holding the individual on the
floor?

×

✓

Use seclusion.

Use floor assisted
restraint.

Talk to the person
until the risk of
injury has
passed, and then
release, slowly
and carefully.